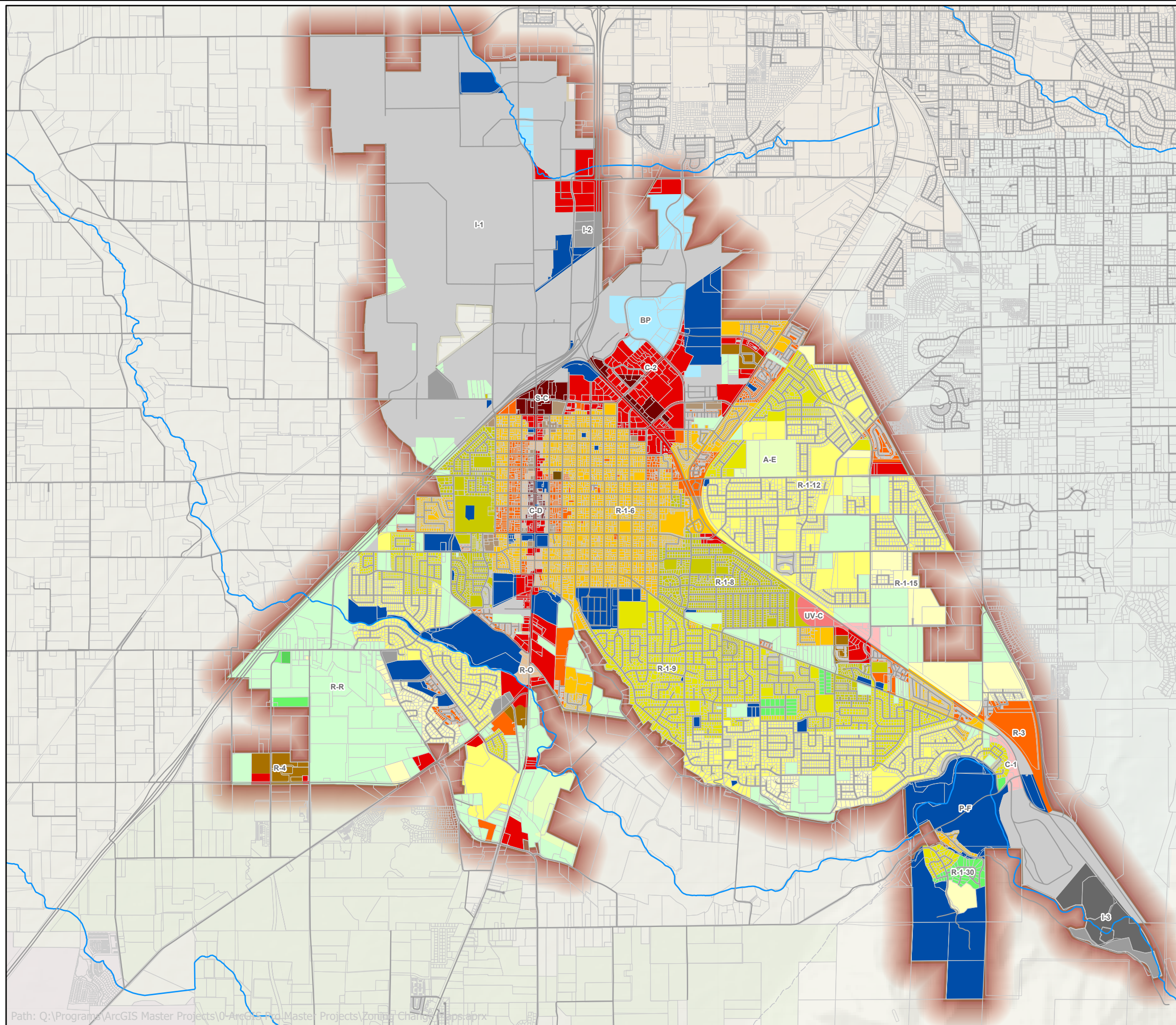


Spanish Fork Zoning Map



1 in = 3,500 ft

A-E	Exclusive Agriculture
R-R	Rural Residential
R-1-80	Residential District
R-1-60	Residential District
R-1-40	Residential District
R-1-30	Residential District
R-1-20	Residential District
R-1-15	Residential District
R-1-12	Residential District
R-1-9	Residential District
R-1-8	Residential District
R-1-6	Residential District
R-3	Residential District
R-4	Residential District
R-5	Residential District
R-O	Residential Office
C-O	Commercial Office
C-D	Downtown Commercial
C-1	Neighborhood Commercial
C-2	General Commercial
UV-C	Urban Village Commercial
S-C	Shopping Center
P-F	Public Facilities
BP	Business Park
I-1	Light Industrial
I-2	Medium Industrial
I-3	Heavy Industrial



Spanish Fork City GIS
 40 South Main Street
 Spanish Fork, UT 84660
 GIS Administrator (801) 804-4571
 GIS Interns (801) 804-4572

Disclaimer: Spanish Fork City makes no warranty with respect to the accuracy, completeness, or usefulness of these maps. Spanish Fork City assumes no liability for direct, indirect, special, or consequential damages resulting from the use or misuse of these maps or any of the information contained herein. Portions may be copied for incidental uses, but may not be resold.

Date Printed: 12/8/2022

Path: Q:\Programs\ArcGIS Master Projects\0-ArcGIS Pro Master Projects\Zoning Change Maps.aprx